

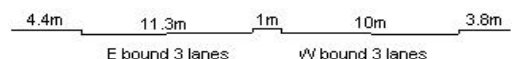
YEAR 2019

CORE STATION 1029

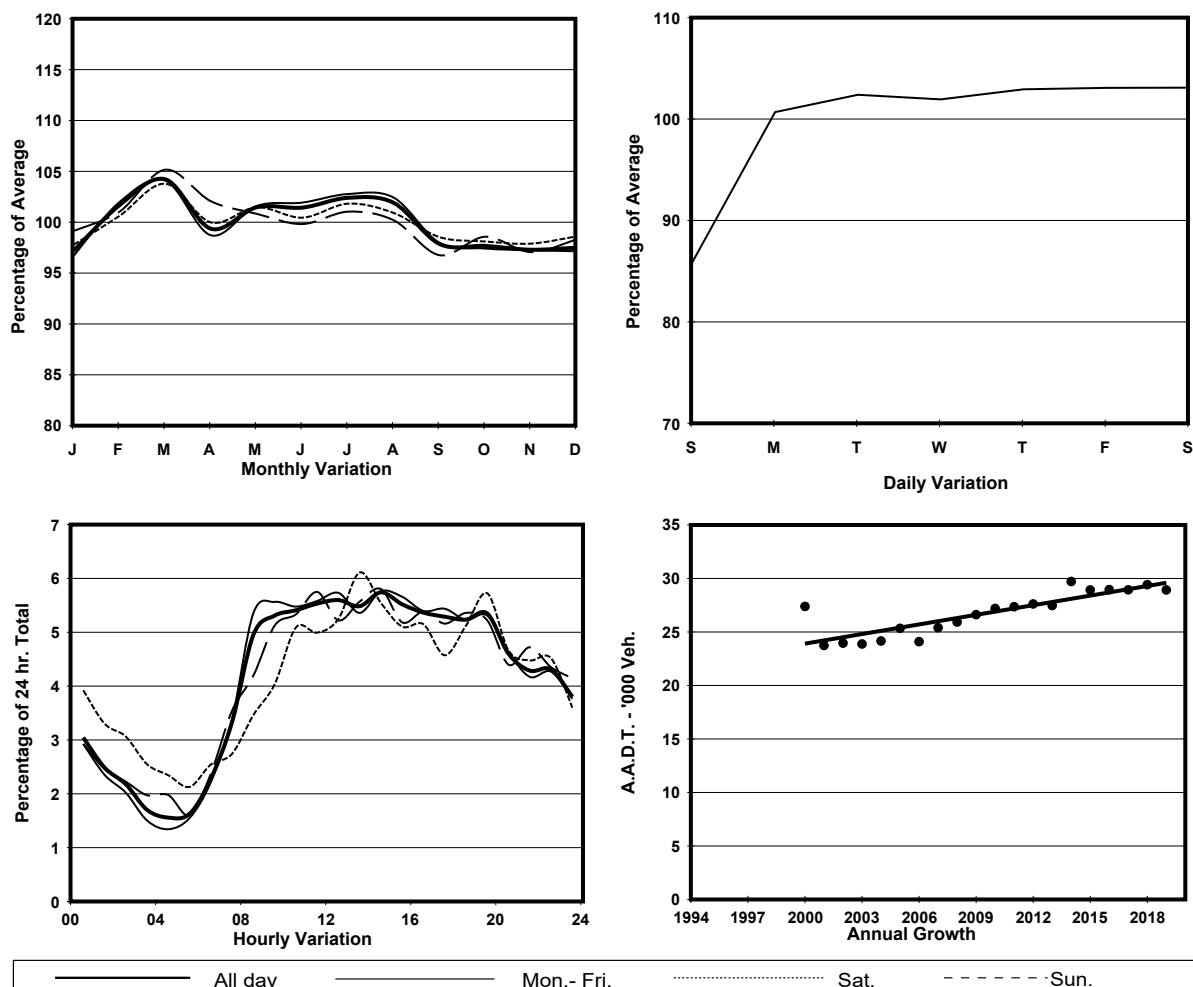
ROAD NETWORK MAJOR

ROAD TYPE PRIMARY DISTRIBUTOR

LINK HENNESSY RD (from LUARD RD to FLEMING RD)



1. TRAFFIC FLOW VARIATION AND GROWTH



2. TRAFFIC CHARACTERISTICS (BY DIRECTION)

Parameter	All - Day	Mon. - Fri.	Sat.	Sun.
EAST BOUND				
A.A.D.T.	15810	16300	16650	13340
R 12 / 24 - %	61.6	62.8	59.6	56.2
R 16 / 24 - %	79.3	80.5	77.9	73.9
AM Peak Hour	0900-1000	0800-0900	0900-1000	0900-1000
One-way flow at AM peak hour	800	890	810	510
T - % (AM)	-	-	-	-
PM Peak Hour	1600-1700	1600-1700	1800-1900	1600-1700
One-way flow at PM peak hour	860	910	850	690
T - % (PM)	-	-	-	-
Prop.of commercial vehicles - 16 hr.	-	-	-	-
WEST BOUND				
A.A.D.T.	13120	13490	13430	11690
R 12 / 24 - %	64.2	65.3	64.1	58.3
R 16 / 24 - %	83.7	84.5	83.4	79.5
AM Peak Hour	0900-1000	0900-1000	0900-1000	0900-1000
One-way flow at AM peak hour	730	790	740	500
T - % (AM)	-	-	-	-
PM Peak Hour	1700-1800	1700-1800	1600-1700	1800-1900
One-way flow at PM peak hour	740	790	780	610
T - % (PM)	-	-	-	-
Prop.of commercial vehicles - 16 hr.	-	-	-	-

3. OTHER INFORMATION AND COMMENT